



LED MODULES

SA R-SP LED(2835) Series

Features

- High Efficiency 2835 LED Mounted
- Constant current (Non-DALI Compatible).
- 175° Wide beam angle optiLens applied.
- IP65 Rated
- Compact design and convenient usability.
- CE, ROHS and UL certified.
- 5Years Warranty

Specification

Item Code	Type	Power(W)	Luminous Flex(lm)	Current (A)	Max In Series
SA 9191 G2	1 LED	0.9	122	0.075	20EA
SA 9291	2 LED	2.0	190	0.167	40EA
SA 9391	3 LED	3.0	285	0.25	20EA

Technical Characteristics

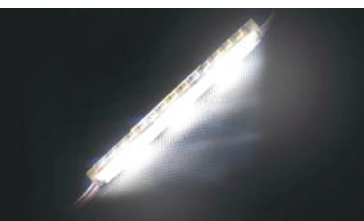
Voltage	DC12V
Efficiency	up to 135lm/W
Viewing Angle	175°
IP Rating	IP65
CCT	6,500K
CRI(Ra)	80+
LED Type	2835 LED

Certification



Temperature Ranges

Operating temperature	-25-60°
Storage temperature	-25-70°



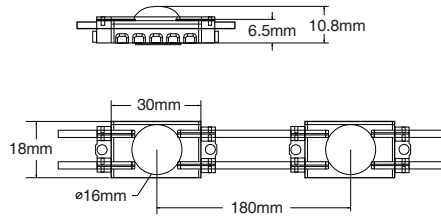
Warranty

Warranty	5 Years
----------	---------

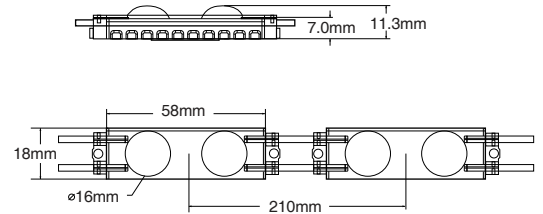
Physical Characteristics

Profile Drawings

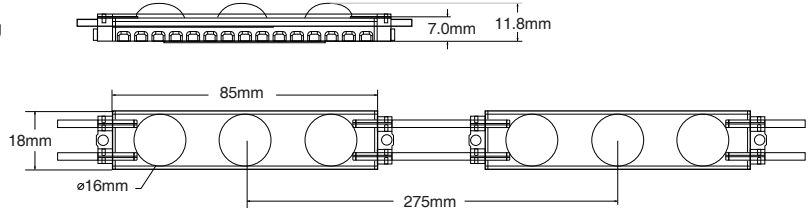
1 LED
 Weight : 10 g



2 LED
 Weight : 18 g

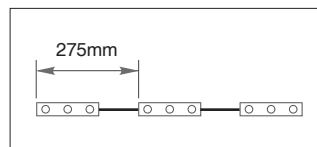


3 LED
 Weight : 33 g

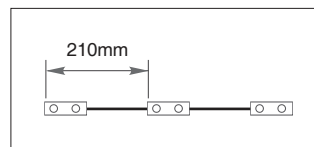


Module Layout Guides

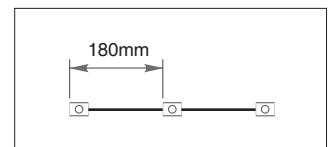
3 LED



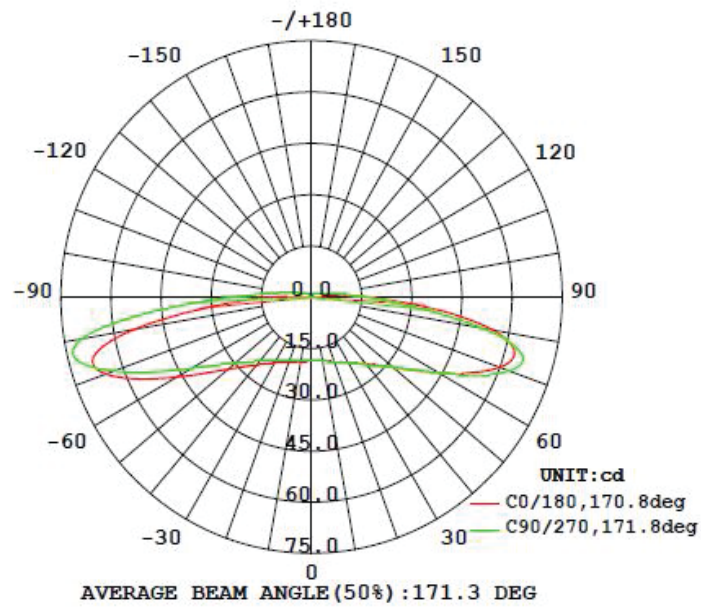
2 LED



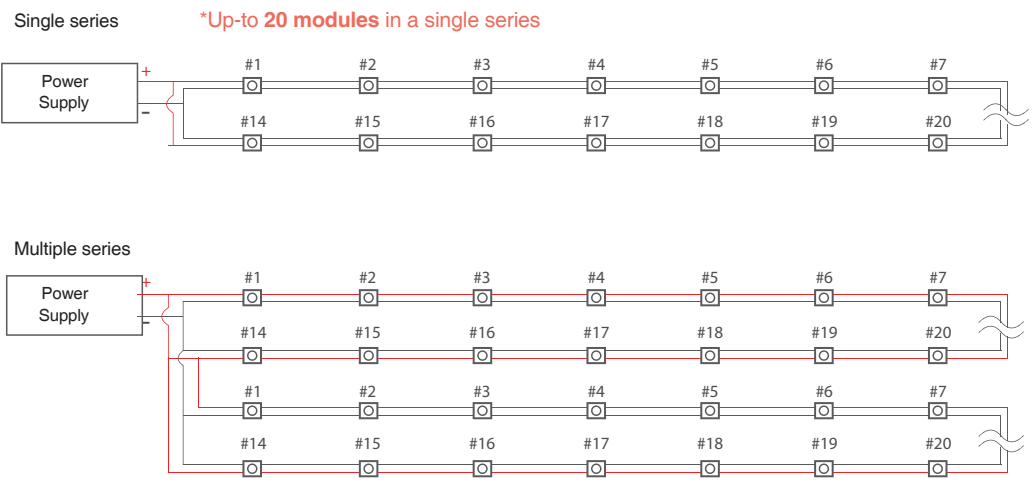
1 LED



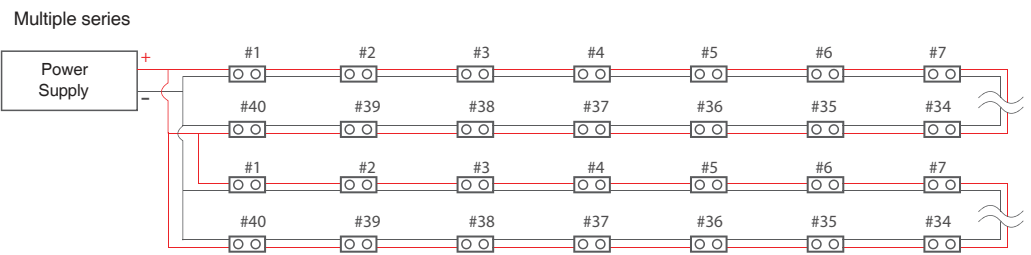
| Luminous intensity distribution diagram



| 1LED - Max in series **20 EA**



2LED - Max in series 40 EA



3LED - Max in series 20 EA

